

# HMX™ Manager

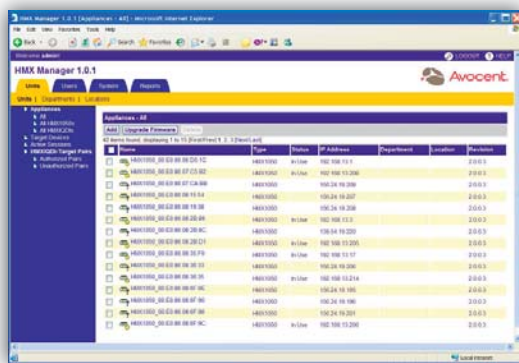
Centralized administration of all HMX series  
Desktop over IP components



## Provide Administration of all HMX components from one centralized console

The Avocent Desktop Area Network supports physical separation of computer and user anywhere within the limits of a LAN without compromising the desktop experience. The simple pair of Computer Interface Module and Desktop User Station allows for ease of installation and simple deployment. The Administration Node provides administration and connection management for Avocent HMX system components along with a rich suite of access profiles and internal authentication.

The HMX Manager is delivered as a hardened appliance with secure browser-based access. The HMX Manager can be connected to two simultaneous networks; one network to be used for deployment of the HMX system and the other for the systems administrator to access the system from the LAN using any network PC.



*The HMX Manager provides administration, authentication and connections broker features to all HMX components from one console and one management database.*

## CONNECTION MANAGER BENEFITS

- **Central Administration.** Allows Desktop Over IP solutions to be managed from one central console
- **Central Authentication.** Provides one database for management of all user authentication using an internal database
- **Logging and Reporting.** The HMX Manager provides logs of all system and user events, allowing the desktop administrator to provide detailed reports of computer usage and user activity
- **Desktop Pooling.** Users can be assigned a computer from a pool of similar function computers, allowing the computer to be used and then returned to the pool for general use
- **Secure Access.** SSL communication and secure authentication guarantee that access to any computing resource is managed securely from one location
- **Service or Appliance Based.** All the features of the HMX Manager are provided as a 'lower maintenance' dedicated appliance

## Specifications

### HARDWARE

- **Memory** - 2 GB RAM
- **Storage** - 80 GB SATA hard drive, 7200 rpm
- **Interfaces** - 2x1 Gigabit Ethernet ports  
1x RS-232 serial console port

### MECHANICAL

- **Height** - 1.7 in. (4.3 cm)
- **Width** - 16.8 in. (42.7 cm)
- **Depth** - 14 in. (35.6 cm)
- **Unit Weight** - 15 lb. (5.9 kg)

### ENVIRONMENTAL / POWER

- **Operating Temperature** - 52° (0°C) to 95°F (35°C)
- **Storage Temperature** - -31° (-35°C) to 158°F (70°C)
- **Humidity** - 10 to 90% non condensing
- **Power In** - 260 W universal

### STANDARDS

- **Approvals** - FCC Class B  
EN 60950/IEC 60950  
UL Listed (USA)  
CUL Listed (Canada)  
TUV Certified (Germany)  
CE Marking (Europe)

## Features

### CONNECTION BROKER

The Connection Broker Module provides automated management of the connections between authenticated users and their allocated computers with the following available features

- **User profiles** - This feature allows the administrator to create a profile for each user that is applied to each user's access session each time the user logs into the desktop client. This profile controls which computer is allocated to the user.
- **Connection Modes** - After a successful log in, users can be connected to their computing resources in desktop mode. This mode gives a user access to one dedicated computer
- **Computer Pooling** - This feature allows the administrator to allocate a number of computers to a resource pool and have users access the next available computer in that pool each time they log in.

### AUTHENTICATION

The Authentication Module provides the facility to verify user credentials each time they log in at a desktop client. This authentication module has the following main feature:

- **Internal Authentication** - This feature allows the administrator to create an account for each user specifying the user name and password for that user. This account data is stored in an internal database that is held securely within the appliance.

### SECURITY AND CONTINUITY

The Desktop Connection Manager provides several layers of security, which guarantees that each user access session is only granted once all security criteria have been fulfilled.

### LOGGING AND AUDIT

The Logging and Audit Module provides a log of all system events and allows the administrator to compile reports based on these logs.

- **Events Logged** - The Logging and Audit Module provides logs of all system events and user events including:
  - User login, logout and computer chosen
  - User authentication success or fail
  - Power status, firmware status and system alarms for each of the system hardware elements
- **Reporting Formats** - Reports can be created in Microsoft Excel or csv formats for import into any industry standard reporting tools.

